





# ASSEMBLY INSTRUCTION

Item No.:

1430K-1 (1/3) California/Eastern King Headboard

1430K-2 (2/3) California/Eastern King Footboard & Slats

1430K-3CK (3/3) California King Side Rails With Crown

Hardware List In-K-2

NO.	DESCRIPTION	FIGURE	Q'TY
F	Allen Key		1PC
G	Bolt 1/4" x 1.25"L		10PCS
H	Screw Ø8*Ø4*1.25"L		26PCS

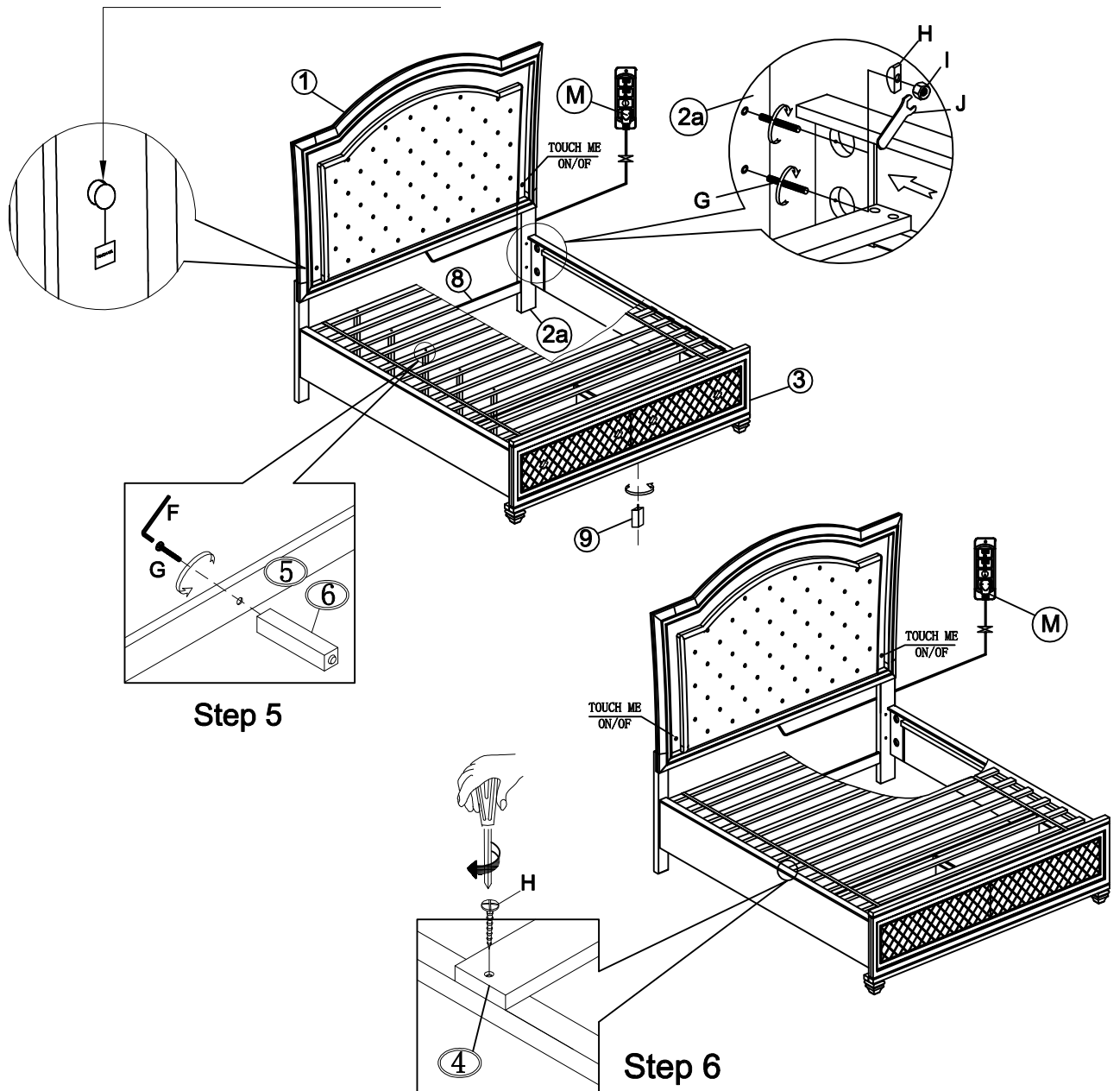
Hardware List In-3

NO.	DESCRIPTION	FIGURE	Q'TY
I	Bolt $\frac{5}{16}$ " x 3"L		8PCS
J	Curved washer		8PCS
K	Bolt		8PCS
L	Spanner Wrench		1PCS

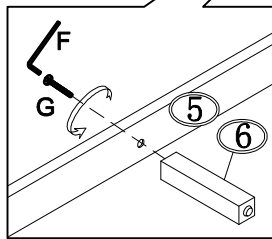
Tools Required: Please use a screwdriver for the screwdriver is not included

"the first touch is on , second touch is brighter , third touch is brighter and brighter , fourth touch is off"

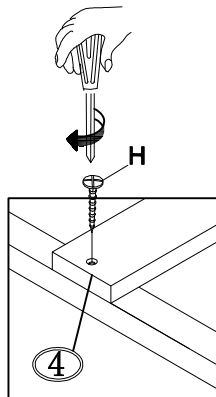
## Step 4



## Step 5



## Step 6



**NOTE :**

▲ DO NOT TIGHTEN BOLTS UNTIL COMPLETELY ASSEMBLED