



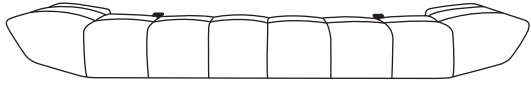
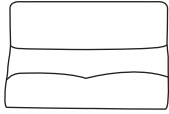
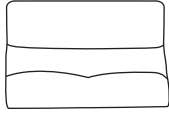

Assembly Instruction

Sofa with Power Adjustable Seat Depth and Manual adjustable Headrest (2 pillows)



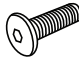





ITEM NO.: 9556BUE-3PW / 9556GRY-3PW / 9556LGY-3PW

NOTE: Do not use power tools for assembly. Power tools increase the risk of over tightening which leads to splitting or cracking the wood.

COMPONENT LIST

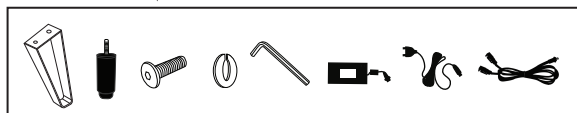
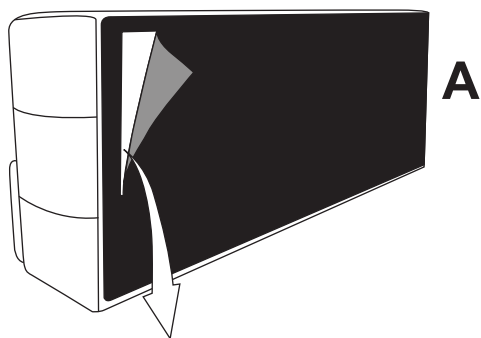
NO.	DRAWING	QTY	DESCRIPTION
A		1 PC	SEAT
B		1 PC	LSF BACKREST
C		1 PC	RSF BACKREST
D		2 PCS	PILLOW

HARDWARE LIST

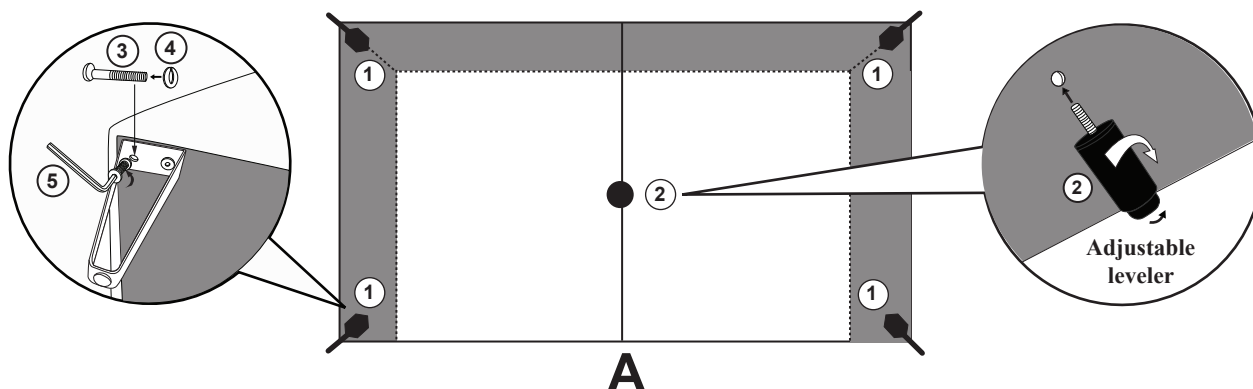
NO.	DRAWING	QTY	DESCRIPTION
1		4 PCS	METAL LEG (178MM)
2		1 PC	ADJUSTABLE LEG (122MM)
3		8 PCS	BOLT (8x30MM)
4		8 PCS	LOCK WASHER (16MM)
5		1 PC	ALLEN KEY (30MM)
6		1 PC	ADAPTOR
7		1 PC	PLUG WITH WIRE
8		1 PC	Y CABLE

STEP#1

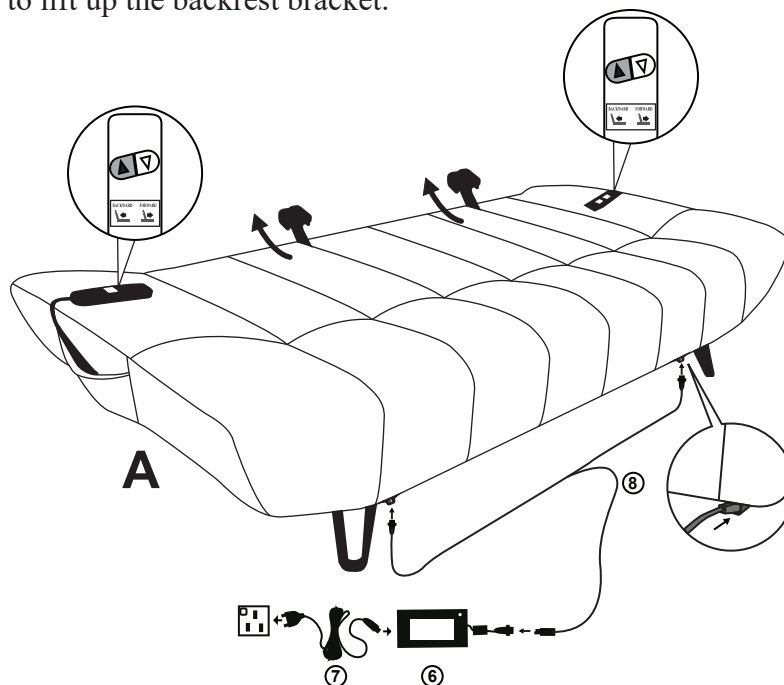
Unzip the dust woven underneath of seat (A), unpack the hardware.

**STEP#2**

Align and attach legs (1) to chair, insert bolts (3) and washers (4) and tighten with Allen key (5). Attach and rotate clockwise to tighten the adjustable leg (2). Adjust the adjustable leg height to be level with floor.

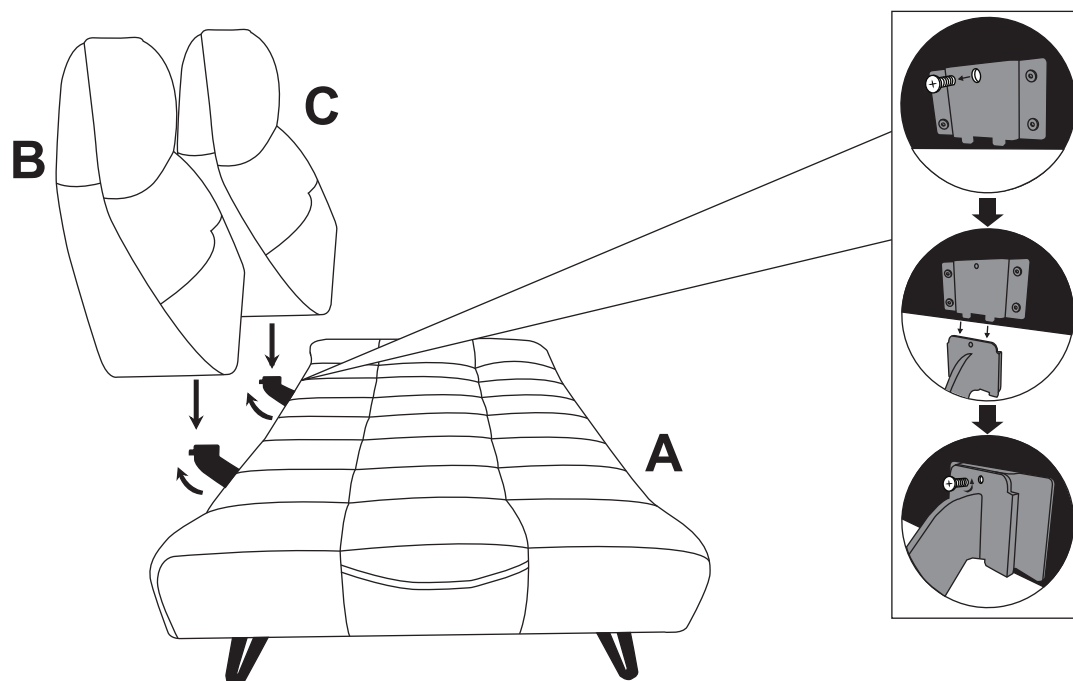
**STEP#3**

Carefully align and connect the plug with wire (7) to the slot at the adaptor (6). Connect Y-cable (8) to the adaptor (6). Align and attach the cord of Y-cable (8) to the slot of chair and make sure it is connected with securely. Press the UP button on remote control to lift up the backrest bracket.

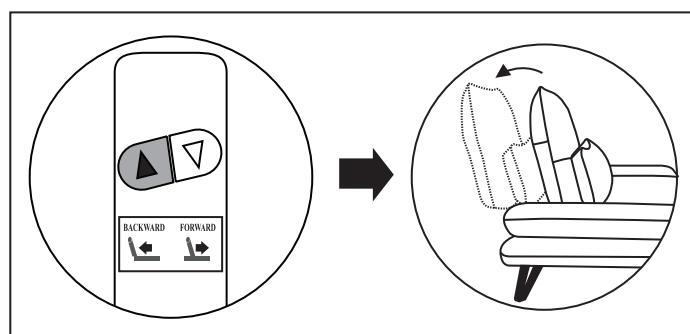
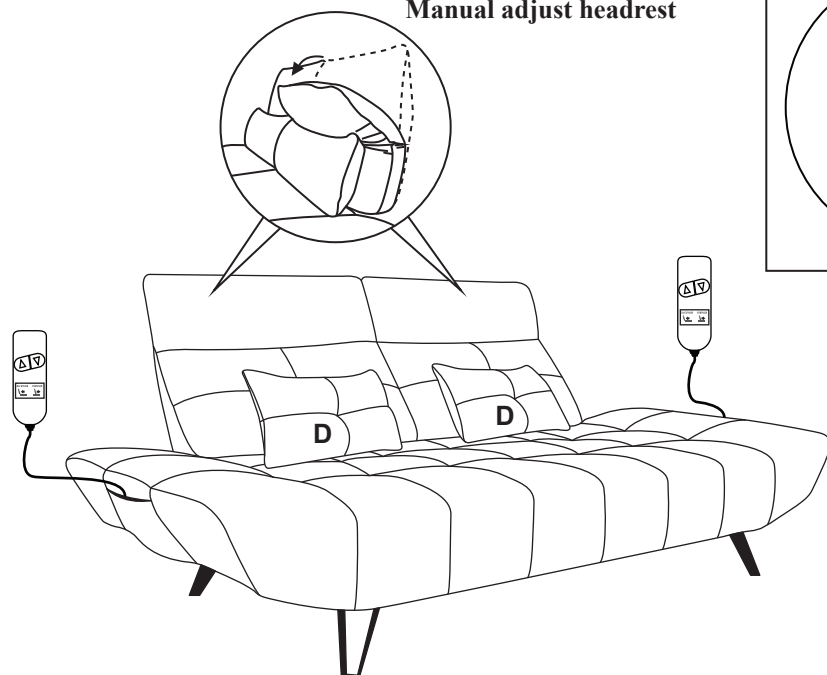


STEP#4

Untighten the bolt on the bracket of LSF and RSF backrest (B) & (C). Align the male connecting brackets of LSF and RSF backrest (B) & (C) onto the female brackets of seat (A), and tighten the bolt.

**STEP#5**

Operating instruction.

Manual adjust headrest**CARE INSTRUCTION FOR POLYESTER:**

In order to maintain the original appearance of your polyester furniture, please follow below simple care procedure :

- Avoid exposing furniture directly to sunlight or heating and air conditioning outlets. Exposure to sunlight or heating and air conditioning outlets will fade/damage polyester.
- Wipe gently with a damp soft cloth to remove dust, dirt and any grime build up.
- Hardware may loosen over time. Periodically check to make sure all connections are tight. Re-tighten if necessary.